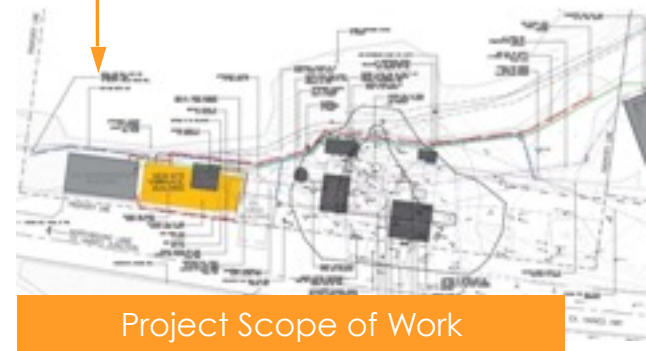


Project Scope

Pleasant Camp Port of Entry Border Crossing Redevelopment

- Construct new site service building
- Install buried new buried site services – water, fuel, power, communication
- Install new water treatment plant
- Install new power plant
- Remediate contaminated soils
- Hazardous materials abatement at four building
- Development of new water supply well
- Complete work while existing facility remains operational



Background

Existing Site



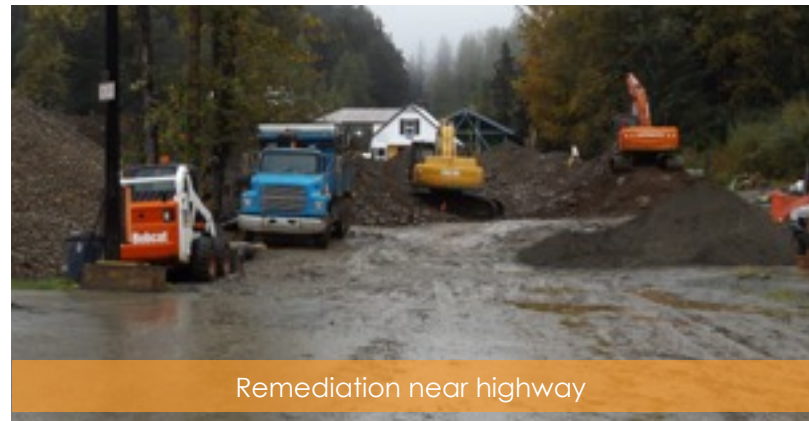
New Buried Site Services

Water, Fuel, Power



Site Works

Hazardous Material Abatement, Demolition, & Remediation



New Site Services Building

Project Highlights:

- A large contaminated soils remediation project was completed over a majority of the site. The excavation and backfill operation was completed within the available short construction season
- New buried services were installed throughout the site including water distribution, double walled fuel lines, power and communication services. The services were installed with no disruption to existing services. New buried services were strategically located so that contaminated soils remediation could be completed
- A new water supply well was developed for the project and the station now has a safe potable water supply
- A Site Services Building was constructed to house the new utility systems for the site including fuel, power, water and communication
- A new water treatment plant to treat for high Fluoride concentration was designed and constructed and provides excellent drinking water to the station.
- An emergency generator was installed to ensure that the station can remain operational during power outages
- The Work was completed on an aggressive schedule at a constrained and congested work site while existing facility remained operational



Building in construction



Nano filtration system



Completed Building



Fuel oil system



175 kW emergency generator



Port back in winter operation